

Parla

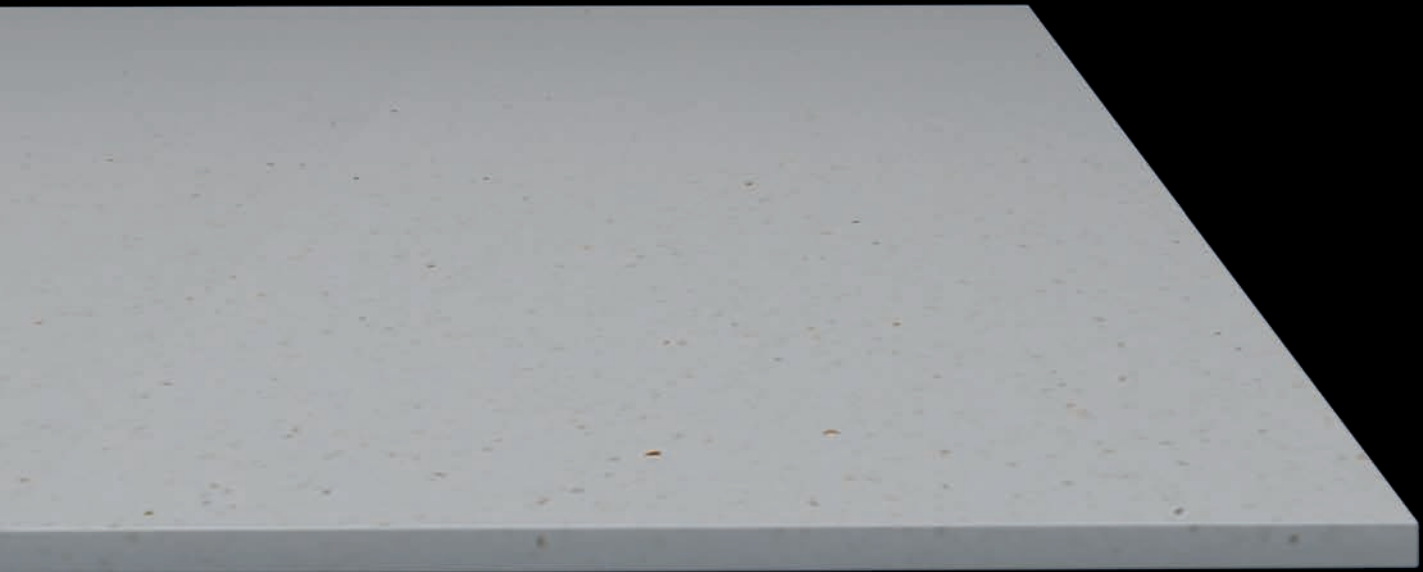
Residential, office, and garage building

Manzana M11 del PERI UE-20 "LA FUENTE"
Villa de Parla. MADRID.

Architects: Luis Acerete del Castillo

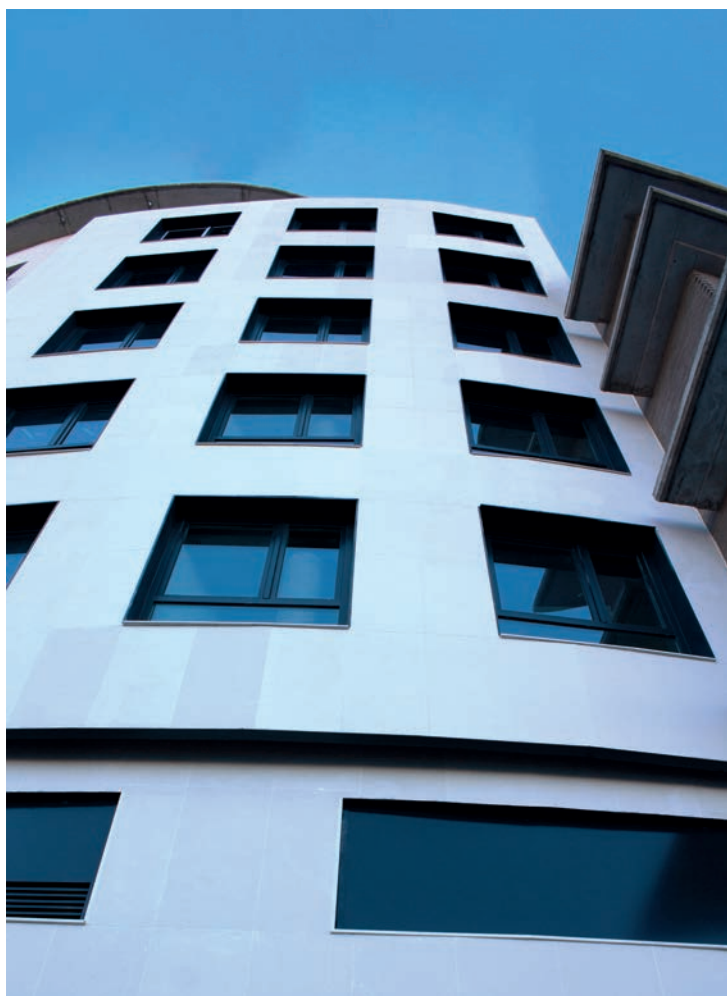


Material



Capri White





Contact

HEADQUARTERS ↗

+ 34 91 676 52 14

info@gracco.es

GRACCO

SURFACES